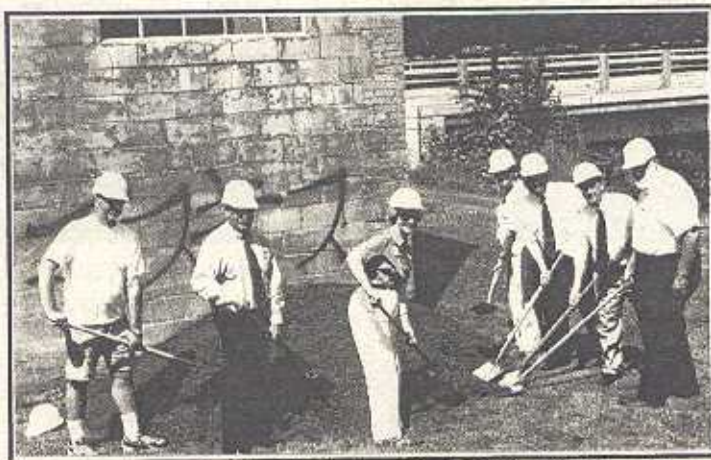


## MUSEUM GROUND BREAKING

The Historical Society held an official groundbreaking ceremony at the museum site on Wednesday, August 20. Blue skies and a pleasant breeze added a nice touch to the noontime ceremony that was attended by over eighty local residents, dignitaries, and historical society members. Speakers included City Commissioner Bruce Zantjer, State Senator Patti Birkholz, State Representative Mary Ann Middaugh, Historical Society of Michigan Director Larry Wagenaar, and Otsego Historical Society Chairman Ryan Wieber. Following the speeches and the symbolic breaking of ground, all present were served hot dogs, chips, cookies and punch by society members. Local media present were WWMT, the Kalamazoo Gazette, and the Union Enterprise. Many thanks are due to the people who helped to make the museum kickoff event so impressive.



L-R: Nick Breedveld, Clyde Crawford, Patti Birkholz, Mary Ann Middaugh, Larry Wagenaar, Ryan Wieber, Bruce Zantjer.

## WHERE'S THE CHOCOLATE?

If you know a little bit of Otsego's history, you know that Pine Creek was actually settled first, then Otsego shortly afterward. You probably also know that Otsego was known for its mineral springs which were thought to be therapeutic, and brought visitors for miles around. You undoubtedly also know that Otsego was (and still is) known for its paper mills. But, did you know that Otsego had a chocolate shop? No, wait--actually two chocolate shops!

The book of local history *As It Was In Otsego* by Dorothy Dalrymple and Archie Nevins, notes "1915 - the Chocolate Shop was opened by Mrs. Young and her daughter Mrs. Rowley and the popular enterprise continued until 1930." Then, later, the same book states: "1920 Cecil Davis opened a studio in Otsego. In 1945 he moved into the Campbell building built in 1912, on East Allegan Street. This had been occupied by the Colonial Confectionary store which William Corning had operated for 18 years." Can you imagine a chocolate shop in Otsego? Let alone two? At the same time?

As a dyed-in-the-wool chocolate lover, I feel I've been robbed! I think, even in this age of fast food and "big box" stores, there is still room for a chocolate shop in Otsego, maybe like "The Chocolate Vault" in Tecumseh. This former bank building has been transformed into a chocolate lover's heaven, filled with home-made chocolates of every size and shape imaginable. The owners didn't stop there. They took it a few steps further, combining it with a coffee shop and an ice cream parlor -- be still my heart! They even ship orders received via the internet. Want to know more? Check out their website at [www.chocoalvault.com](http://www.chocoalvault.com). Going to visit? Bring back some for me please!

*Jennifer Mitchell*

**BRICK FUNDRAISING PROJECT** - Be a part of Otsego's history by purchasing a brick paver to be placed in the exterior walkway of the renovated building. Two brick sizes are available to inscribe your family's name, loved ones, memorials, honorarium, church or business name. Pavers make wonderful gifts for Christmas, birthdays, anniversaries, or other special occasions.

- For a gift of \$50.00, one 4" x 8" brick will be placed in the museum walkway with your personalized inscription. A brick of this size will accommodate three lines of text, 13 characters per line, including spacing and punctuation.
- For a gift of \$100.00, one 8" x 8" brick will be placed in the museum walkway with your personalized inscription. This size brick will accommodate 5 lines of text and 13 characters per line, including spacing and punctuation.

This is a one-time opportunity. These brick pavers will be available for purchase only until December 31, 2003. The bricks will be engraved and put in place in the walkway in March or April of 2004. If you wish to participate in this fundraiser please pick up an application at the library and send it in right away. Applications are also available at many downtown businesses.

All sales of brick pavers will go toward the purchase or construction of display cases and museum interior furnishings, and other initial museum operating costs.